

Fletcher Insulation

Building Better, Together



Commercial & Roofing Catalogue

Edition No. 6



Contents

Introduction

Trusted Solutions: Fletcher Insulation	3
NCC Deemed-to-Satisfy	4-6

Underslab

Pink® Thermal Slab	7
Pink® NoiseSTOP™ with Durasorb® Facing	8
Permastop® Building Blanket	9

Wall Insulation

Pink® Partition	10-11
Pink® Batts: Wall	12
Party Wall Batts (Fire Stop)	13

Wall Wrap

Sisalation® Tuff Wrap™ Wall Wrap	14
Sisalation® Vapawrap® Vapour Permeable Residential Wall Wrap	15

Roof Sarking & Building Membranes

Sisalation® Metal Roof Sarking	16
Sisalation® Vapawrap® Vapour Permeable Metal Roof	17
Sisalation® Multipurpose EHD (456)	18
Sisalation® Foam Cell Multipurpose	19
Sisalation® Facing Foils	20

Roofing Blanket

Pink® Building Blanket	21
Permastop® Building Blanket	22
Permastop® Tropic Building Blanket	23
Permatuff™ Building Blanket	24
Pink® EmberGuard™ Building Blanket	25

Ceiling Insulation

Pink® Batts: Ceiling	26
Pink® SonoMatt® Blanket	27

Roofing Ancillary

Safety Mesh	28
Roof Razor®	29

Acoustic Barriers

Quadzero™ Loaded Vinyl Barrier	30
Soundlag 4525C Pipe Acoustic Lagging	31

Tapes & Ancillary

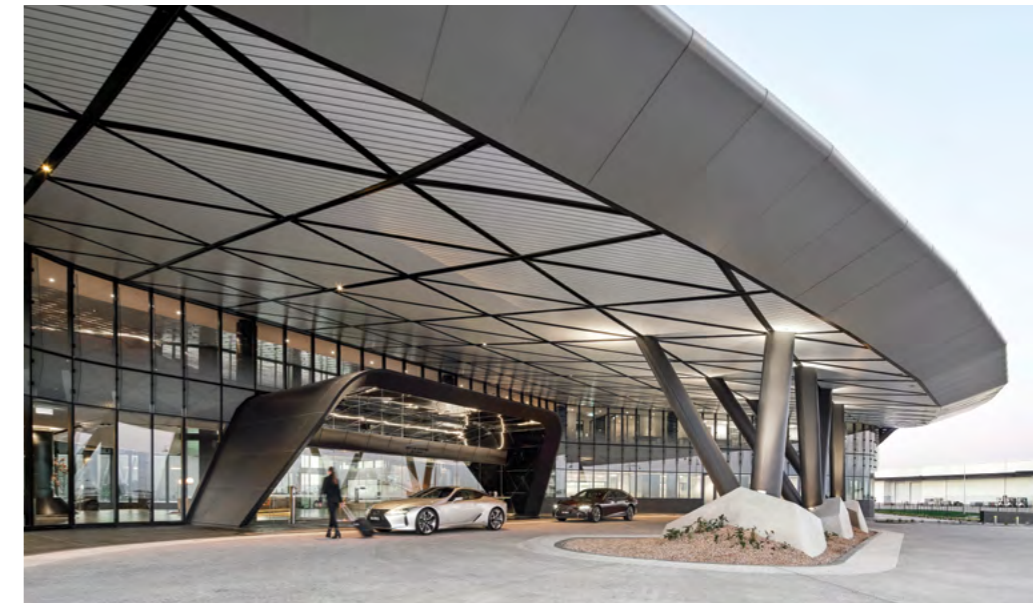
Vapastop® 883 Reinforced Foil Tape	32
Plain Foil Tape	32
3M Seaming Tape	32
Double Sided Cloth Tape	33
Sisalation® MD 440WF White Tape	33
Black Tape	33
Thermatape™ Thermal Break Strip	34

Get in touch with us	35
-----------------------------	-----------

Trusted Solutions: Fletcher Insulation

With one of Australia's widest distribution and sales coverage networks, Fletcher Insulation® provides energy efficient and acoustic solutions to the residential, commercial, HVAC and industrial markets. We manufacture and distribute a wide range of insulation products specially designed for Australian thermal and acoustic systems.

At the forefront of innovation and development of cost effective and compliant products, we remain committed to offering valuable service to our customers. Our national sales force has the experience and knowledge to provide assistance for any project or development to meet non-combustibility, acoustic, energy efficiency and condensation management performance requirements.



The Commercial Market

The market for insulation in the commercial building sector demands products that enable buildings to meet stringent requirements as set out in the National Construction Code (NCC) for thermal, acoustic and fire performance. Fletcher Insulation provides tested and proven insulation products, from Permastop® Building Blanket used in metal roofing and Sisalation® Building Membranes for roofing and wall applications, to partition wall insulation or suspended slab and specialist acoustic insulation applications.

The Fletcher Insulation Commercial & Roofing Catalogue has been designed to be used in conjunction with our Product Selection Guides for understanding best suited product in application as well as our Technical Data Sheet for product performance, standards compliance and specification for best practice methods for installing Fletcher Insulation products. The catalogue is not designed to be used for understanding how product performs in application or technically, rather a comprehensive guide of the range of insulation available at Fletcher Insulation, along with product codes for ease of reference and or selection.

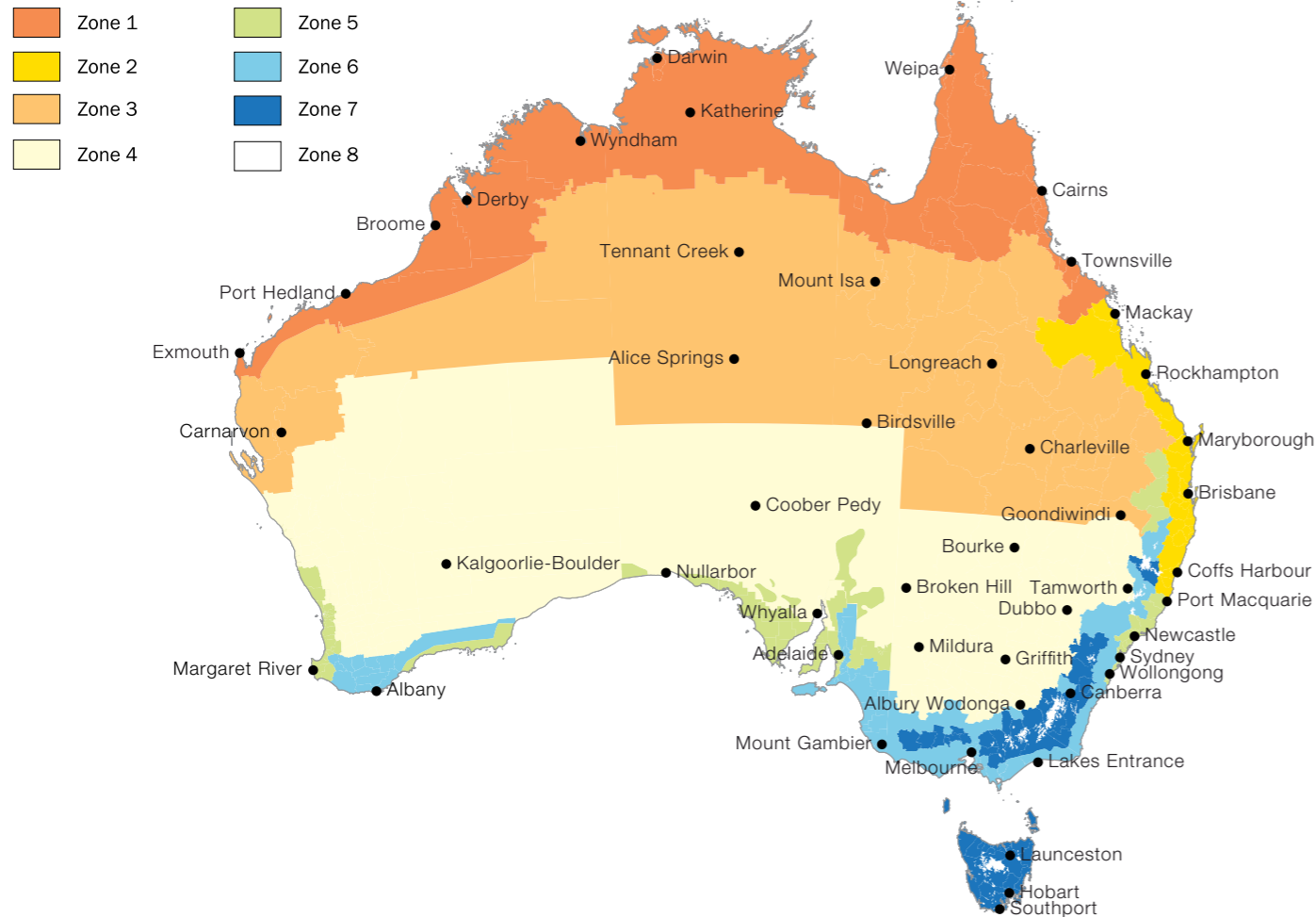
NCC Deemed-to-Satisfy

Australia has a varied climate, leading to different locations around the country having different heating and cooling requirements. To account for these differences the energy efficiency Deemed-to-Satisfy Provisions vary from location to location and for simplicity, locations with approximately similar climates have been combined into eight climate zones.

The following provides a brief description of each NCC climate zone:

- Climate zone 1** High humidity summer, warm winter
- Climate zone 2** Warm humid summer, mild winter
- Climate zone 3** Hot dry summer, warm winter
- Climate zone 4** Hot dry summer, cool winter
- Climate zone 5** Warm temperate
- Climate zone 6** Mild temperate
- Climate zone 7** Cool temperate
- Climate zone 8** Alpine

These eight climate zones are illustrated below in the form of a climate zone map which was created using Bureau of Meteorology climatic data with two supplementary zones added to accommodate an additional temperate zone and alpine area. The climate zone boundaries are also aligned with local government areas and are therefore subject to change from time to time.



NCC 2019 Deemed-to-Satisfy insulation for commercial class 2 to 9 buildings

Building classes 2 and 4 must collectively achieve an average energy rating of not less than 6 stars and individually achieve an energy rating of not less than 5 stars.

Table 1: Roofs and Ceilings Ref: NCC Vol 1 Table J1.3

Options	Minimum System R-value for climate zones:							
	For downward direction of heat flow						For upward direction of heat flow	
	1	2	3	4	5	6	7	8
i. A roof or ceiling with a roof upper surface solar absorptance value of not more than 0.45	3.7	3.7	3.7	3.7	3.7	3.2	3.7	4.8

Concessions and variations apply. Refer NCC 2019 Vol.1 Section J. **Note:** SA roof upper solar absorptance is ≤ 0.40 . All other climate zones (1, 2, 3, 4, 5, 6 and 7) solar absorptance on the upper surface of the roof must not be more than 0.45.

Table 2: External Walls Ref: NCC Volume 1 Table J1.5a

For walls: the total wall-glazing system U value must meet the requirements set in J1.5 (a) and (d) wall components of a wall-glazing construction must achieve a minimum Total R-value of:

- i. Where the wall is less than 80% of the area of the wall-glazing construction, R1.0;
- ii. Where the wall is 80% or more of the area of the wall-glazing construction, the value specified in Table J1.5a

Options	Minimum System R-value for climate zones:							
	1	2	3	4	5	6	7	8
i. Class 2 common area, Class 5, 6, 7, 8 or 9a building or class 9a building other than a ward area.	2.4	1.4	1.4	1.4	1.4	1.4	1.4	1.4
ii. Class 3 or 9c building or Class 9a ward area	3.3	1.4	3.3	2.8	1.4	2.8	2.8	3.8

Concessions and variations apply. Refer NCC 2019 Vol.1 Section J.

Table 3: Floors Ref: NCC 2019 Vol 1 Table J1.6

Options	Minimum System R-value for climate zones:							
	For upward direction of heat flow				For downward direction of heat flow			
	1	2	3	4	5	6	7	8
i. A floor without an in-slab heating or cooling system	2.0	2.0	2.0	2.0	2.0	2.0	2.0	3.5
ii. A floor with an in-slab heating or cooling system	3.25	3.25	3.25	3.25	3.25	3.25	3.25	4.75

Concessions and variations apply. Refer NCC 2019 Vol.1 Section J. A sub-floor space with not more than 150% of the required sub-floor ventilation is considered enclosed. **Note to Table J1.6:** For the purpose of calculating the Total R-Value of a floor, the sub-floor and soil R-Value must be calculated in accordance with Specification J1.6 or Section 3.5 of CIBSE Guide A.

NCC 2022 Deemed-to-Satisfy insulation for commercial class 2 to 9 buildings

Building classes 2 and 4 must collectively achieve an average energy rating of not less than 7 stars and individually achieve an energy rating of not less than 6 stars. For sole-occupancy units of class 2 and 4 buildings requirements, refer to J3D7 and J3D8.

Table 1: Roofs and Ceilings Ref: NCC Vol 1 Table J4D4(1)

Options	Minimum System R-value for climate zones:							
	For downward direction of heat flow						For upward direction of heat flow	
	1	2	3	4	5	6	7	8
i. A roof or ceiling with a roof upper surface solar absorptance value of not more than 0.45	3.7	3.7	3.7	3.7	3.7	3.2	3.7	4.8

Concessions and variations apply. Refer NCC 2022 Vol.1 Section J. **Note:** SA roof upper solar absorptance is ≤ 0.40 . All other climate zones (1, 2, 3, 4, 5, 6 and 7) solar absorptance on the upper surface of the roof must not be more than 0.45 (NCC 2022 J4D4(2)).

Table 2: External Walls Ref: NCC Volume 1 Table J4D6a

For walls: the total wall-glazing system U value must meet the requirements set in J4D6(1) and (4) wall components of a wall-glazing construction must achieve a minimum Total R-value of:

- i. Where the wall is less than 80% of the area of the wall-glazing construction, R1.0; or
- ii. Where the wall is 80% or more of the area of the wall-glazing construction, the value specified in Table J4D6a

Options	Minimum System R-value for climate zones:							
	For upward direction of heat flow						For downward direction of heat flow	
	1	2	3	4	5	6	7	8
i. Class 2 common area, Class 5, 6, 7, 8 or 9a building or class 9a building other than a ward area.	2.4	1.4	1.4	1.4	1.4	1.4	1.4	1.4
ii. Class 3 or 9c building or Class 9a ward area	3.3	1.4	3.3	2.8	1.4	2.8	2.8	3.8

Concessions and variations apply. Refer NCC 2022 Vol.1 Section J.

Table 3: Floors Ref: NCC 2022 Vol 1 Table J4D7

Options	Minimum System R-value for climate zones:							
	For upward direction of heat flow				For downward direction of heat flow			
	1	2	3	4	5	6	7	8
i. A floor without an in-slab heating or cooling system	2.0	2.0	2.0	2.0	2.0	2.0	2.0	3.5
ii. A floor with an in-slab heating or cooling system	3.25	3.25	3.25	3.25	3.25	3.25	3.25	4.75

Concessions and variations apply. Refer NCC 2022 Vol.1 Section J.

A sub-floor space with not more than 150% of the required sub-floor ventilation is considered enclosed.

Note to Table J4D7: For the purpose of calculating the Total R-Value of a floor, the sub-floor and soil R-Value must be calculated in accordance with Specification 39 or Section 3.5 of CIBSE Guide A.

Pink® Thermal Slab



Designed for use in commercial soffit applications where thermal properties are pivotal in controlling temperature fluctuations of concrete roofs, floors and walls.

Made from lightweight composite of 80% recycled glass using a thermosetting resin forming a semi rigid board faced with a Sisalation® reflective foil laminate adhered to one side.

Product information

- Designed for use in soffit applications
- Provides exceptional acoustic performance
- Achieves AS 5637.1 Group 1 NCC fire classification
- NRC Sound Absorption results are available on the Technical Data Sheet
- Faced with industry leading Sisalation® foil
- Resistance to bacteria and micro-organism growth

Product and stock availability

Minimum order quantities and lead times may apply. Please check all stock availability with your local Fletcher Insulation representative. Product stock varies and not all products are stocked in every Fletcher Insulation location.

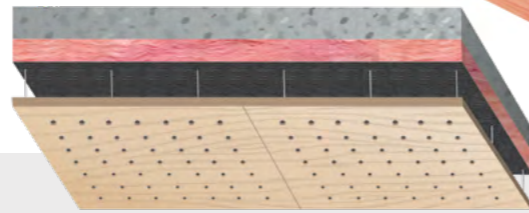
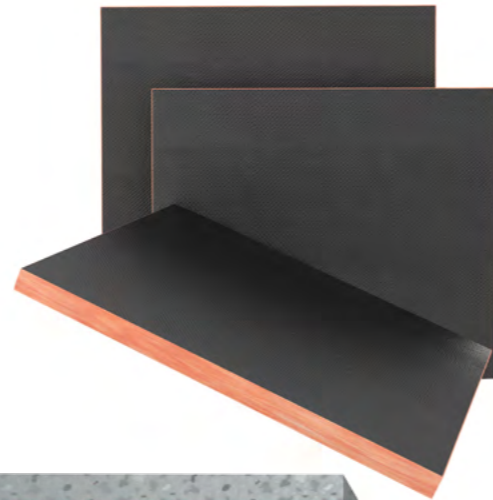
Facing	Material R-value	Nominal thickness mm	Width mm	Length mm	Pieces per pack	m ² per sheet	Product code
Sisalation® 450 Facing Foil Heavy Duty (HD)	R1.5	50	1200	2400	5	14.4	941107
	R2.0	66	1200	2400	3	8.64	941110
	R2.2	75	1200	2400	3	8.64	941108
	R3.0	100	1200	2400	2	5.76	941109

Pink® NoiseSTOP™ with Durasorb® Facing

Designed for use in commercial concrete ceiling, floor and wall applications requiring thermal performance, acoustic control and where a black aesthetic finish is required.

It is also suitable for installation behind perforated linings to provide acoustic absorption and to conceal the substrate behind the metal lining for an enhanced visual appearance.

Made from lightweight composite of 80% recycled glass using a thermosetting resin forming a semi rigid board faced with a 100% non-woven black polyester fabric adhered to one side.



Product information

- 32kg density
- Aesthetically pleasing, non-opaque spun bonded black finish with an embossed pattern
- Provides exceptional acoustic performance ideal for providing privacy between offices, boardrooms, shops etc
- Ideal thermal properties for controlling temperature fluctuations of concrete roofs, floors and walls
- Resistance to bacteria and micro-organism growth

Product and stock availability

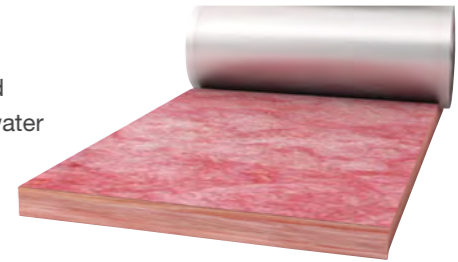
Minimum order quantities and lead times may apply. Please check all stock availability with your local Fletcher Insulation representative. Product stock varies and not all products are stocked in every Fletcher Insulation location.

Material R-value	Nominal thickness mm	Width mm	Length mm	Pieces per pack	Coverage per pack m ²	Product code
R1.2	38	1200	2400	6	17.3	240734
R1.5	50	1200	2400	5	14.4	240735
R2.2	75	1200	2400	3	8.6	240736
R3.0	100	1200	2400	2	5.76	240748

Permastop® Building Blanket

Designed for use in commercial underslab applications where aesthetics is not critical and where the soffit insulation will be installed behind a ceiling and/or wall lining. Acting as a water and vapour barrier to provide thermal and acoustic control for concrete soffit applications.

Made from Pink® Building Blanket (80% recycled glass) faced with Sisalation® reflective facing foil (available in Medium and Heavy Duty) adhered to one side.



Product information

- Delivering very good thermal performance and acoustic control
- The bulk glasswool insulation component of Permastop® insulation installed against the concrete slab provides a damping effect to reduce reverberation noise
- The foil facing provides an effective water and vapour barrier for condensation control in under slab applications
- Reduces sound transfer between floors
- NRC Sound Absorption results are available on the Technical Data Sheet

Product and stock availability

Please check all stock availability with your local Fletcher Insulation representative.

Product stock varies and not all products are stocked in every Fletcher Insulation location.

Facing	Material R-value	Nominal thickness mm	Width mm	Length m	m ² per roll	Product code
Sisalation® 430 Facing Foil Medium Duty (MD) 150mm lap	R1.3	55	1200	15	18	917150
	R1.4	60	1200	15	18	910151
	R1.8	75	1200	15	18	918150
	R2.5	100	1200	10	12	919100
	R3.0	130	1200	10	12	931100
	R3.2	130	1200	10	12	930201
Sisalation® 450 Facing Foil Heavy Duty (HD) 150mm lap	R3.6	130	1200	6.5	7.8	930362
	R1.3	55	1200	15	18	927150
	R1.4	60	1200	15	18	910152
	R1.8	75	1200	15	18	928150
	R2.5	100	1200	10	12	929100
	R3.0	130	1200	10	12	932100
R3.2	130	1200	10	12	930301	
R3.6	130	1200	6.5	7.8	930367	

Pink® Partition

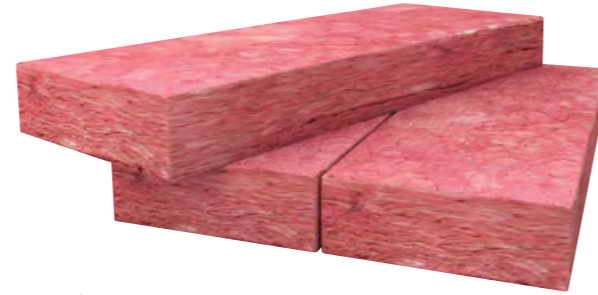
Designed for thermal and acoustic insulation for walls and ceilings to suit metal stud constructions, available in a range of densities.

Made from lightweight, flexible and resilient 80% recycled glass.

Product and stock availability

Please check all stock availability with your local Fletcher Insulation representative.

Product stock varies and not all products are stocked in every Fletcher Insulation location.



Product information

- Codemark Certified for AS 4859.1 Thermal Performance
- Meets AS 1530.1 for Non-Combustibility
- Batt sizes specifically designed to suit commercial steel frame construction but can be trimmed down for timber frame construction
- Reduces sound transfer from the external environment into the building or between adjacent rooms
- Achieves excellent Rw and Rw+Ctr ratings
- Recover to their natural thickness, fast
- Precut batts are friction fitted and will remain in place without slumping for continual thermal performance
- Comfortable to handle during installation
- Safe to use with allergy sufferers due to low VOC

Density	Material R-value m² K/W	Nominal thickness mm	Width mm	Length mm	Pieces per pack	Coverage per pack m²	Pieces per bale	Product code
Pink® Partition (11kg)	R1.2	50	450	1200	32	17.28	5	903442
			600	1200	32	23.04	5	903444
			600	2700	16	25.92	4	903445
	R1.8	75	450	1200	16	8.64	6	903446
			600	1200	16	11.52	6	903448
			600	2700	16	25.92	4	903449
	R2.1	90	450	1200	16	8.64	5	903450
			450	2700	24	29.16	4	903451
			600	1200	16	11.52	5	903452
	R2.5	110	450	1200	16	8.64	5	903458
			600	1200	16	11.52	5	903454
	R3.5	165	450	1200	10	5.74	5	903478
600			1200	10	7.20	5	903463	

Density	Material R-value m² K/W	Nominal thickness mm	Width mm	Length mm	Pieces per pack	Coverage per pack m²	Pieces per bale	Product code
Pink® Partition (14kg)	R1.3	50	450	1200	24	12.96	5	903515
			600	1200	24	17.28	5	903517
	R1.9	75	450	1200	16	8.64	5	903715
			450	2700	18	21.87	4	903716
			600	1200	16	11.52	5	903717
			600	2700	12	19.44	4	903718
R2.2	90	450	1200	14	7.56	5	903915	
		600	1200	14	10.08	5	903919	
Pink® Partition (24 kg)	R0.7	25	600	2700	20	32.40	4	901022
	R1.1	38	600	2700	12	19.44	4	901023
	R1.4	50	600	1200	12	8.64	5	903552
			600	2700	12	19.44	4	901024
	R2.1	75	450	1200	10	5.40	4	903553
			600	1200	10	7.20	4	903554
	R2.5	90	450	1200	8	4.32	4	903555
			600	1200	8	5.76	4	903556
	R2.8	100	450	1200	6	3.24	4	903557
			600	1200	6	4.32	4	903558
Pink® Partition (32kg)	R1.5	50	450	1200	12	6.48	5	903650
			600	1200	15	8.64	5	903652
	R2.2	75	450	1200	8	4.32	4	903770
			600	1200	8	5.76	4	903772
	R2.7	90	450	1200	8	4.32	4	903690
			600	1200	8	5.76	4	903692
	R3.0	100	450	1200	6	3.24	4	903600
			600	1200	6	4.32	4	903694

Pink® Batts: Wall

Designed for thermal insulation of walls in Class 9 low rise commercial building applications including schools, universities, aged care and child care buildings. It is the trusted choice when it comes to constructing new homes or retrofitting existing buildings.

Made from lightweight, flexible and resilient 80% recycled materials.



Product information

- Codemark Certified for AS 4859.1 Thermal Performance
- Non-combustible in accordance with AS/NZS 1530 Part 1
- Recover to their natural thickness, fast
- Batts are friction fitted and will remain in place without slumping for continual thermal performance
- Comfortable to handle during installation
- Safe to use with allergy sufferers due to low VOC

Product and stock availability

Please check all stock availability with your local Fletcher Insulation representative.

Product stock varies and not all products are stocked in every Fletcher Insulation location.

Frame type	Material R-value	Thickness mm	Width mm	Length mm	m ² per pack	Coverage per pack m ²	Batts per pack	Packs per bale	Product code
Timber	R1.5	70	430	1160	12.0	13.6	24	6	900166
			580	1160	16.1	18.2	24	6	900167
	R2.0	90	430	1160	12.0	13.6	24	5	901217
			580	1160	16.2	18.2	24	5	901218
	R2.0 HD	70	430	1160	6.0	6.8	12	6	900210
			580	1160	8.1	9.1	12	6	900211
R2.2	90	430	1160	8.0	9.0	16	6	901220	
		580	1160	10.8	12.2	16	6	901221	
R2.5 HD	90	430	1160	6.0	6.8	12	5	900253	
		580	1160	8.1	9.1	12	5	900256	
Steel	R2.0 HD	70	600	1200	8.6	8.6	12	6	900213
	R2.5HD	90	600	1200	8.6	8.6	12	5	900214

Party Wall Batts (Fire Stop)

Designed for use as fire protection in party or separating wall constructions between adjacent tenancies (Class 1 buildings). They are installed between the top of a party wall and the roofing membrane to reduce fire hazards by separating one dwelling from another.



Made from natural mineralised rock fibres.

Product information

- 64kg/m³ density
- Cost effective fire insulation
- Non-combustible in accordance with AS/NZS 1530 Part 1
- Achieves 2 hour fire resistance, thereby preventing the transfer of fire into adjoining occupancies
- Provide excellent resistance to shrinkage at high temperatures
- Fire performance is not adversely affected by contact with water
- Non-corrosive highly durable insulation material
- Easy to cut and install into tight applications
- Bio-soluble mineral wool and safe to use

Product and stock availability

Please check all stock availability with your local Fletcher Insulation representative.

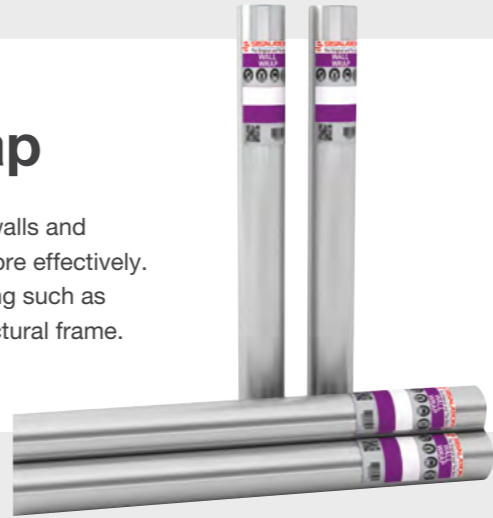
Product stock varies and not all products are stocked in every Fletcher Insulation location.

Product	Nominal thickness mm	Width mm	Length mm	Pieces per pack	Product code
Party Wall Batts	100	168	1200	10	338005
	50	200	1000	3	338006
Fire Strip	13	225	1000	60	338008

Sisalation® Tuff Wrap™ Wall Wrap

Designed for use as a wall wrap building membrane for timber and steel framed walls and gables which assists in minimising draughts enabling bulk insulation to perform more effectively. The 'Breather' variant is better suited for use behind permeable lightweight cladding such as fibre cement sheets, weatherboard and timber that are battened out from the structural frame.

Made from a layer of reflective foil bonded to a polymer-based weave.

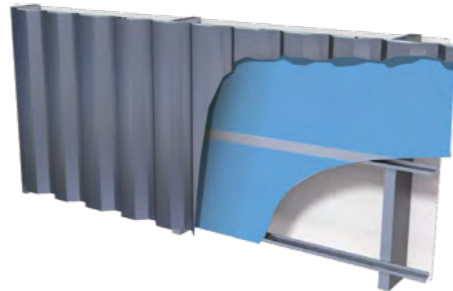


Product information

- Designed to protect buildings by reflecting 95% of radiant heat
- Incorporates an anti-glare coating on one side for added installation safety
- Minimises the amount of moisture absorbed by the frame during construction
- Exceptional strength to weather and tearing

Installation example

Steel frame wall with Sisalation® Tuff Wrap wall wrap



Product and stock availability

Please check all stock availability with your local Fletcher Insulation representative. Product stock varies and not all products are stocked in every Fletcher Insulation location.

Product	Width mm	Length m	m ² per roll	Roll weight kg	Product code
Sisalation® Tuff Wrap™ Wall Wrap Standard (497)	1350	30	40.5	4.3	255088
		60	81	9	255092
Sisalation® Tuff Wrap™ Wall Wrap Breather (497)	1350	30	40.5	4.3	255089
		60	81	9	255087

It is important that the cladding manufacturer's requirements are referred to when determining the suitability of Sisalation® 497 Tuff Wrap™ Wall Wrap Breather (497).

Sisalation® Vapawrap® Vapour Permeable Residential Wall Wrap

Designed for use in colder regions (climate zones 6, 7 and 8) as a vapour permeable membrane to allow for vapour transfer and also act as a water barrier for condensation management.

Provides superior protection against damaging winds and heavy rain which can penetrate through exterior cladding and roofing material. Sisalation® Vapawrap® Vapour Permeable Residential Wall Wrap will keep water out, allowing moisture vapour inside the structure to escape.

Made from a water resistant non-woven fabric.

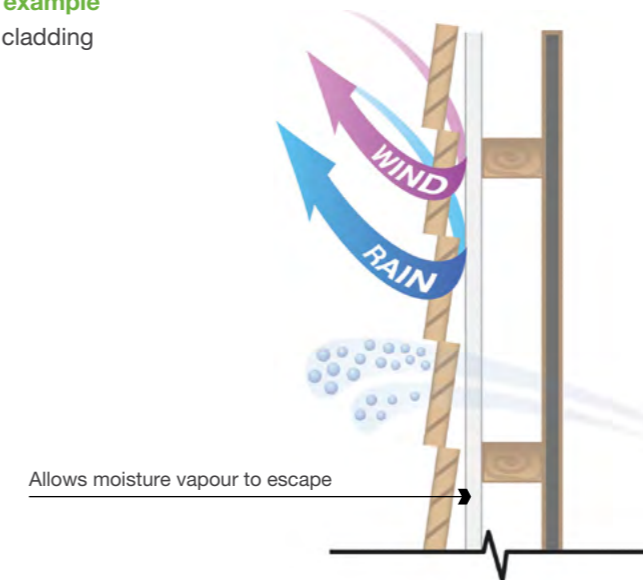


Product information

- Allows water vapour to escape from buildings through walls, reducing the potential of condensation and mould growth
- Can be exposed to UV for up to 8 weeks, allowing internal building work to commence before external cladding is installed
- Meets flammability requirement of ≤ 5, as per AS/NZ1530.2 and suitable for use in bush fire areas with BAL (Bushfire Attack Level) of 0-FZ
- Use with 3M Seaming Tape (product code 318838) to ensure all wall wrap joints are sealed

Installation example

Lightweight cladding



Product stock and availability: Please check stock availability with your local Fletcher Insulation representative. Product stock varies and not all products are stocked in every Fletcher Insulation location.

Width mm	Length m	m ² per roll	Roll weight kg	Product code
1365	30	40.5	5	256253
1500	30	45	5.5	256290

Sisalation® Metal Roof Sarking

Designed for use as a sarking in commercial metal roof construction.

Made from double sided reflective aluminum foil one side with an anti-glare coating, double layered high density kraft paper. HD option is reinforced by yarn.

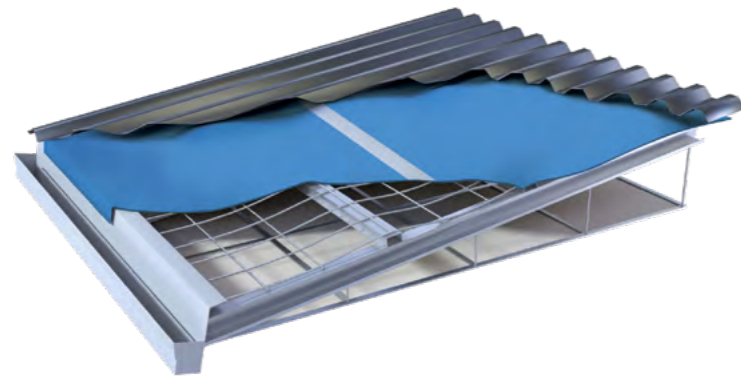


Product information

- Strong, tear and scratch resistant
- The foil-paper composition reduces the risk of noise generated in metal roofs
- Incorporates an anti-glare coating on one side for added installation safety
- Minimises draughts, thereby allowing bulk wall insulation to perform more effectively

Installation example

Commercial metal clad roof with Sisalation® Metal Roof sarking.



Product and stock availability

Please check all stock availability with your local Fletcher Insulation representative. Product stock varies and not all products are stocked in every Fletcher Insulation location.

Product	Width mm	Length m	m ² per roll	Roll weight kg	Product code
Sisalation® Metal Roof Medium Duty (433)	1350	30	40.5	6.35	951282
	1350	60	81	12.43	951260
Sisalation® Metal Roof Heavy Duty (453)	1350	60	81	14.86	952260

Sisalation® Vapawrap® Vapour Permeable Metal Roof

Designed for use in residential applications in colder climate zones, with metal roof span less than or equal to 900mm unsupported or less than or equal to 1200mm with support.

Provides a secondary skin against liquid water, wind and dust penetration. The effective vapour permeance also protects the building frame by minimising the accumulation of interstitial condensation.

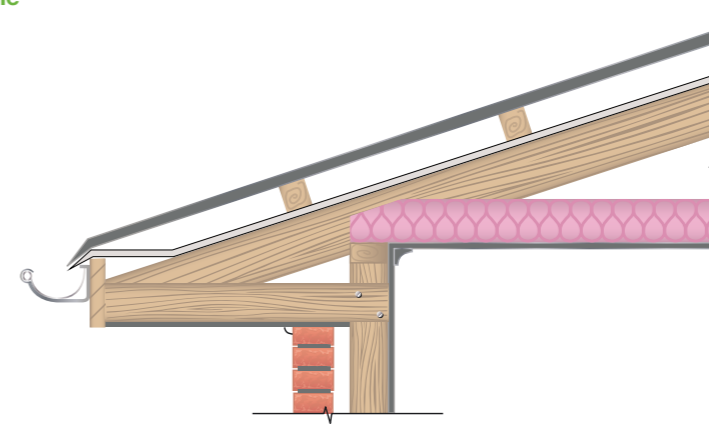
Made from resilient non-woven fabric.



Product information

- High vapour permeance helps water vapour escape buildings, working to reduce the chance of condensation build-up that may result in mould growth
- High tensile strength will resist damage from minor point loads or equipment during installation of roof sheeting
- Flexible and lightweight which makes it easy to install and speeds up installation time

System example



Product stock and availability: Please check stock availability with your local Fletcher Insulation representative. Product stock varies and not all products are stocked in every Fletcher Insulation location.

Width mm	Length m	m ² per roll	Roll weight kg	Product code
1350	30	40.5	4.8	256700

Sisalation® Multipurpose EHD (456)

Designed for use as a pliable building membrane in applications such as brick veneer walls, tile roofs (with the exception of slate) and metal roofs (where it can be installed under the battens). Sisalation® Multipurpose products are specifically designed for external wall applications in climate zones 1–5 and in suitable roofing applications in all climate zones.

Made from a layer of aluminium foil bonded to a polymer-based weave. The EHD option is reinforced by yarn.

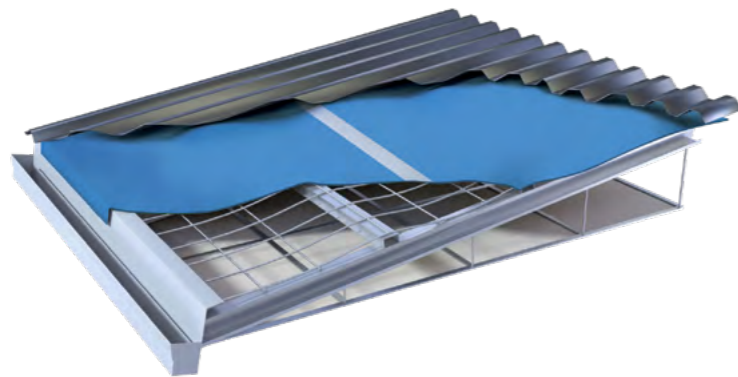


Product information

- Dual purpose – may be used as a wall wrap and/or metal roof sarking
- Satisfies Bushfire Attack Level (BAL) requirements of
- 0–40 in roof applications and 0–FZ in wall applications (in accordance with AS 3959–2018)
- Incorporates an anti-glare coating on one side for added install safety
- Superior strength to weather and tearing

Installation example

Commercial metal clad roof with Sisalation® Multipurpose EHD (456).



Product stock and availability: Please check stock availability with your local Fletcher Insulation representative.

Product stock varies and not all products are stocked in every Fletcher Insulation location.

Width mm	Length mm	m ² per roll	Roll weight kg	Product code
1350	30	40.50	4.85	352330
	60	81.00	9.43	352360
1500	30	45.00	5.39	352331

Sisalation® Foam Cell Multipurpose

Designed for use as a 3-in-1 multipurpose insulation, vapour barrier and thermal break solution for steel framed wall and roof construction, to reduce the thermal bridging and conductivity between building elements. It is commonly also used in timber framed roof construction for added insulative properties.

Made from a closed cell, cross-linked XPE foam core encapsulated between two layers of low emissivity reflective laminate, one side with an anti-glare coating.

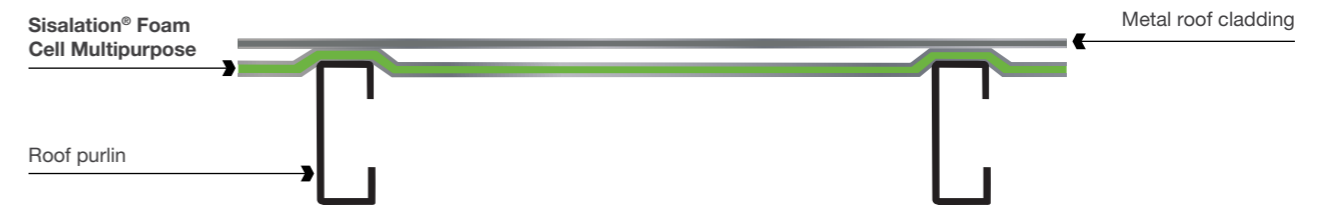


Product information

- AS 5637.1 Group 2 fire rating
- Suitable for use as a thermal break for steel framed constructions in accordance with NCC requirements
- Includes a 150mm foil flap to maximise coverage and minimise taping
- Incorporates an anti-glare coating on one side for added installation safety
- Aids in the prevention of condensation
- Maximum durability and increased tear resistance
- Allows for easy and rapid installation

Installation example

Commercial metal clad roof with Sisalation® Foam Cell Multipurpose.



Product and stock availability

Please check all stock availability with your local Fletcher Insulation representative.

Product stock varies and not all products are stocked in every Fletcher Insulation location.

Material R-value	Nominal thickness mm	Width mm	Lap mm	Length m	m ² per roll	Product code
R0.20	8.4	1350	150	22.25	30	395264

Sisalation® Facing Foils

Designed for Sisalation® Facing Foils act as a water and vapour barrier. Facing foils are a reflective foil laminate used for facing to glasswool blanket, formulating the Permastop® product range.

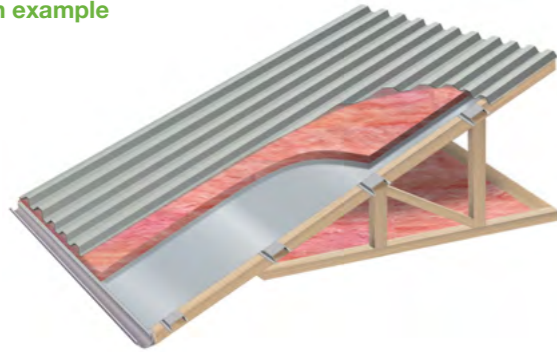
Made from double sided reflective aluminium foil, double layered high density kraft paper. The HD option is reinforced by yarn.



Product information

- Suitable for use as a building blanket facing foil for metal deck roofing and underpinning concrete roof slabs
- Perforated option maximises the acoustic absorption properties of glasswool insulation
- Strong, tear and scratch resistant
- When used in conjunction with an airspace, it is an effective thermal insulation material
- Provides an effective vapour barrier
- Aids in the prevention of condensation

Installation example



Product and stock availability

Please check all stock availability with your local Fletcher Insulation representative. Product stock varies and not all products are stocked in every Fletcher Insulation location.

Product	Width mm	Length m	m ² per roll	Roll weight kg	Product code
Sisalation® Light Duty Standard 436 Facing Foil	1350	1000	1350	297	950230
	1500	1000	1500	347	950232
Sisalation® Heavy Duty 450 Facing Foil	1000	60	60	10.45	952136
	1200	60	72	12.49	952154
	1200	300	360	63.47	952148
Sisalation® Heavy Duty Perforated 450P Facing Foil	1350	60	81	14.05	952160
	1200	300	360	56.74	952151
	1350	600	720	226	952163
	1350	60	81	12.53	952182
	1350	300	405	63.80	952178
	1380	600	828	127.88	952207
	1500	300	450	70.89	952198
1500	600	900	138.97	952204	

Pink® Building Blanket

Designed for use in conjunction with Sisalation® product range in residential and commercial metal clad roof and wall applications. Providing excellent thermal and acoustic properties by reducing heat loads entering a building. Minimising the internal reverberation and flow of unwanted nuisance noise generated from adjacent buildings/rooms and/or the external environment.



Made from lightweight, flexible and resilient 80% recycled glass.

Product information

- Meets AS 1530.1 for Non-Combustibility
- Reduces sound transfer from the external roof environment into the building (i.e. rain and overhead traffic)
- Ideal for noise control behind perforated ceilings
- Designed for all year round comfort reducing energy consumption and saving you money

Product and stock availability

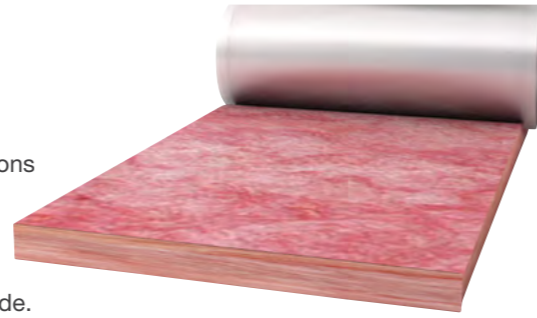
Please check all stock availability with your local Fletcher Insulation representative. Product stock varies and not all products are stocked in every Fletcher Insulation location.

Material R-value	Nominal thickness mm	Width mm	Length m	m ² per roll	Product code
R1.3	55	1200	25	30	905337
		1200	30	36	905300
		1200	33	39.6	905330
R1.8	75	1200	25	30	907250
R2.5	100	1200	15	18	908920
R3.0	130	1200	10	12	909100
R3.2	130	1200	10	12	909203
R3.6	130	1200	6.5	7.8	909306

Permastop® Building Blanket

Designed for use in residential and commercial metal clad roof and wall applications to provide thermal, acoustic and condensation control to the building.

Made from Pink® building blanket (80% recycled glass) faced with Sisalation® reflective facing foil (available in Light, Medium and Heavy duty) adhered to one side.



Product information

- Combines two effective types of insulation (1. Pink® Building Blanket and 2. Sisalation® Facing Foil) to offer one single product solution
- Aids in minimising the risk of condensation
- Reduces sound transfer from the external environment (i.e. rain and overhead traffic) into the building
- All year round comfort increasing overall energy efficiency to a building
- Faced with industry leading Sisalation® reflective foil laminate in your choice of Light, Medium or Heavy duty strength

Product and stock availability

Please check all stock availability with your local Fletcher Insulation representative.

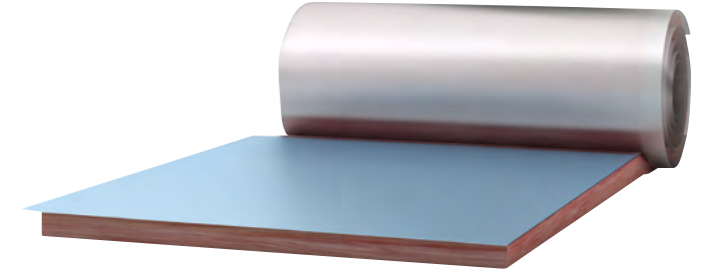
Product stock varies and not all products are stocked in every Fletcher Insulation location.

Facing	Material R-value	Nominal thickness mm	Width mm	Length m	m ² per roll	Product code
Sisalation® 436 Facing Foil Light Duty (LD) 150mm lap	R1.3	55	1200	15	18	912150
			1200	20	24	912200
	R1.4	60	1200	15	18	910150
			1200	20	24	910200
	R1.8	75	1200	15	18	913150
	R2.5	100	1200	10	12	914100
	R3.0	130	1200	10	12	930100
	R3.2	130	1200	10	12	930101
R3.6	130	1200	6.5	7.8	930368	
Sisalation® 430 Facing Foil Medium Duty (MD) 150mm lap	R1.3	55	1200	15	18	917150
	R1.4	60	1200	15	18	910151
	R1.8	75	1200	15	18	918150
	R2.5	100	1200	10	12	919100
	R3.0	130	1200	10	12	931100
	R3.2	130	1200	10	12	930201
	R3.6	130	1200	6.5	7.8	930362
Sisalation® 450 Facing Foil Heavy Duty (HD) 150mm lap	R1.3	55	1200	15	18	927150
	R1.4	60	1200	15	18	910152
	R1.8	75	1200	15	18	928150
	R2.5	100	1200	10	12	929100
	R3.0	130	1200	10	12	932100
	R3.2	130	1200	10	12	930301
	R3.6	130	1200	6.5	7.8	930367

Permastop® Tropic Building Blanket

Designed for use in Australia's hot and humid tropical regions in residential and commercial metal clad roof and wall applications to provide greater condensation protection, while also providing excellent thermal and acoustic benefits for the building.

Made from Pink® building blanket faced with Sisalation® foil on both sides. An anti-glare tropic facing on one side (top) and a reflective facing foil laminate on the underside.



Product information

- Aids in minimising the risk of condensation for Australia's northern tropical climates
- Reduces sound transfer from the external roof environment into the building (i.e. rain and overhead traffic)
- All year round comfort increasing overall energy efficiency to a building
- Faced with industry leading Sisalation® reflective foil laminate
- The layer of Sisalation® incorporates a 150mm overlap positioned in an alternating configuration

Product and stock availability

Please check all stock availability with your local Fletcher Insulation representative.

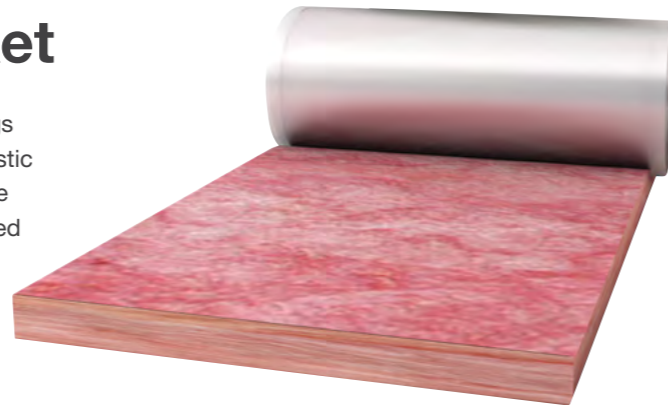
Product stock varies and not all products are stocked in every Fletcher Insulation location.

Facing	Material R-value	Nominal thickness mm	Width mm	Length m	m ² per roll	Product code
Double-sided Sisalation® Facing Foil Light Duty (LD) 150mm lap	R1.4	60	1200	15	18	910239
	R1.8	75	1200	15	18	913202

Permatuff® Building Blanket

Designed for use in non-exposed commercial metal clad roof linings and internal wall applications. Providing excellent thermal and acoustic properties by reducing heat loads entering a building. Minimising the internal reverberation and flow of unwanted nuisance noise generated from adjacent buildings/rooms and/or the external environment.

Made from Pink® Building Blanket that is faced on one side with a strong quality Sisalation® Multipurpose EHD (456) polyweave reflective foil laminate.



Product information

- Not suitable for exposed wall applications. Please refer to the Permastop® product.
- Aids in minimising the risk of condensation
- Features a stronger, more puncture resistant Sisalation® reflective polyweave backing
- Reduces sound transfer from the external roof environment into the building (i.e. rain and overhead traffic)
- All year round comfort increasing overall energy efficiency to a building
- Cut to length available. Please check additional lead times in your area

Product and stock availability

Please check all stock availability with your local Fletcher Insulation representative. Product stock varies and not all products are stocked in every Fletcher Insulation location.

Material R-value	Nominal thickness mm	Width mm	Length m	m ² per roll	Product code
R1.3	55	1200	15	18	905151
		1200	20	24	905201
R1.8	75	1200	15	18	905156
R2.5	100	1200	10	12	905205

Pink® EmberGuard™ Building Blanket

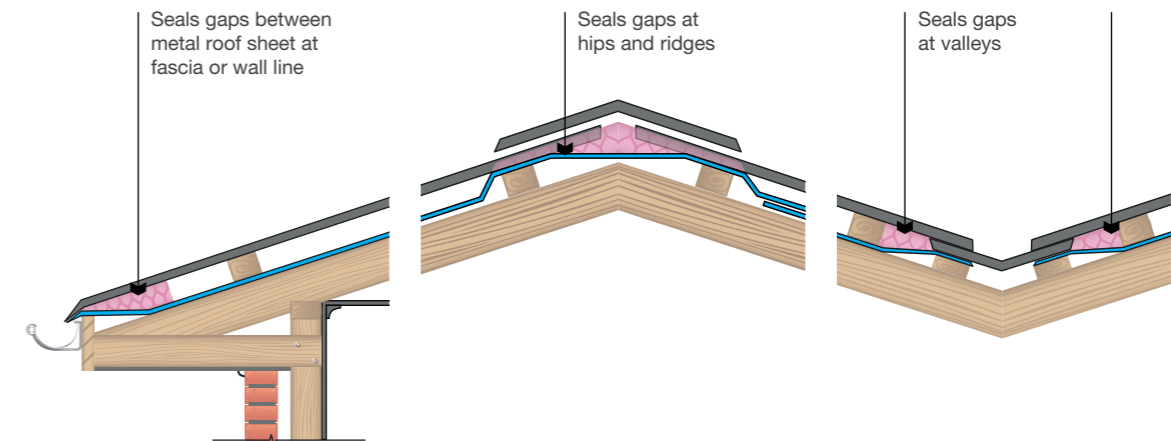
Designed for use under metal and tiled roofing materials in residential constructions. Ideal for use as a gap seal in roofs of buildings in bush fire prone areas. It is recommended to be installed in conjunction with Sisalation® Multipurpose EHD (456) or Sisalation® Metal Roof MD (433) or HD (453).

Made from up to 80% recycled content that is lightweight, flexible and resilient.

Product information

- Non-combustible in accordance with AS1530.1–1994 reducing fire risk
- For use in bushfire prone areas with a Bushfire Attack Level (BAL) of 12.5–40 (Ember Attack)
- Cost effective regulatory compliant solution providing peace of mind against ember attack

Installation example



Product and stock availability

Please check all stock availability with your local Fletcher Insulation representative. Product stock varies and not all products are stocked in every Fletcher Insulation location.

Thickness mm	Width mm	Length m	Rolls per pack	Lineal m ² per pack	Product code
25	300	20	4	80	910242

Pink® Batts: Ceiling

Designed for thermal insulation of ceilings in Class 9 low rise commercial building applications including schools, universities, aged care and child care buildings. It is the trusted choice when it comes to constructing new homes or retrofitting existing buildings.

Made from lightweight, flexible and resilient 80% recycled materials.



Product information

- Codemark Certified for AS 4859.1 Thermal Performance
- Non-combustible in accordance with AS/NZS 1530 Part 1
- Recover to their natural thickness, fast
- Batts are friction fitted and will remain in place without slumping for continual thermal performance
- Comfortable to handle during installation
- Safe to use with allergy sufferers due to low VOC

Product and stock availability

Please check all stock availability with your local Fletcher Insulation representative. Product stock varies and not all products are stocked in every Fletcher Insulation location.

Material R-value	Thickness mm	Width mm	Length mm	m ² per pack	Coverage per pack m ²	Batts per pack	Packs per bale	Product code
R2.5	130	430	1160	8.0	9.0	16	6	901254
		580	1160	10.8	12.2	16	6	901255
R3.0	155	430	1160	8.0	9.0	16	5	901304
		580	1160	10.8	12.2	16	5	901305
R3.5	175	430	1160	8.0	9.0	16	4	901354
		580	1160	6.7	7.6	10	6	901355
R4.1	195	430	1160	5.0	5.6	10	5	901414
		580	1160	6.7	7.6	10	6	901415
R5.0	220	430	1160	4.0	4.5	8	5	901504
		580	1160	5.4	6.1	8	5	901505
R6.0	250	430	1160	3.0	3.4	6	5	901604
		580	1160	4.0	4.5	6	5	901605
R7.0	285	430	1160	2.0	2.3	4	5	901704
		580	1160	2.7	3.0	4	5	901705

Pink® SonoMatt® Blanket

Designed for use in multiple applications such as partitions, screens, baffles and ceiling overlays for effective sound absorption particularly for 'problem' acoustic applications unsolved by more routine acoustic products. Due to its lightweight black matt tissue facing its ideal to conceal imperfections behind perforated linings, while improving the overall aesthetic appearance of the internal lining.

Made from Pink® glasswool building blanket substrate faced with black matt tissue adhered to one side.

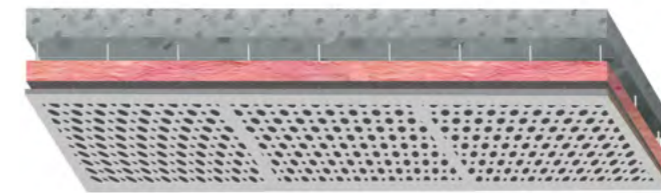


Product information

- Faced with an aesthetically pleasing black finish
- Excellent fire performance
- Exceptional acoustic performance, ideal for providing privacy between offices, boardrooms, shops etc
- Provides the added benefit of thermal insulation to improve the energy efficiency of a building
- Manufactured from up to 80% recycled glass
- Resistance to bacteria and micro-organism growth

Installation example

Underslab with suspended perforated ceiling application.



Product and stock availability

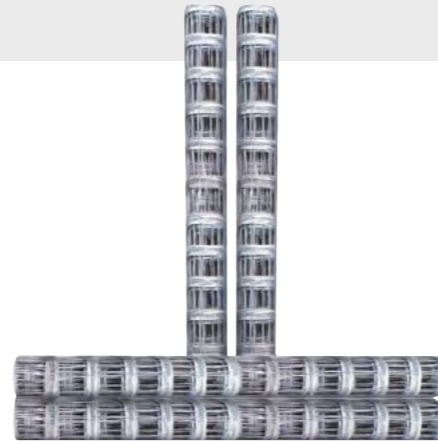
Please check all stock availability with your local Fletcher Insulation representative. Product stock varies and not all products are stocked in every Fletcher Insulation location.

Material R-value	Nominal thickness mm	Width mm	Length m	m ² per roll	Product code
R1.3	55	1200	20	24	941045
R1.8	75	1200	15	18	941046
R2.5	100	1200	15	18	941047
R3.0	130	1200	12	14.4	941048

Safety Mesh

Designed for use in a variety of applications such as factories, warehouse, shopping centres, schools, office blocks and sheds to provide fall protection for roof installers and offers long-term fall protection for maintenance and repair workers.

Made from high quality, galvanised Australian steel wire.



Product information

- Uniform strength and consistent quality over the length of the mesh
- Exceeds the 450 MPa tensile requirement (AS/NZS 4389) at 500–700 MPa making it stronger and safer
- Where a decorative finish is required, black or white options are available.

Product and stock availability

Please check all stock availability with your local Fletcher Insulation representative. Product stock varies and not all products are stocked in every Fletcher Insulation location.

Product	Width mm	Length m	Wire diameter mm	Mesh size mm	Product code
Galvanised	1800	50	2	300 x 150	332600
	2250	50	2	300 x 150	332601
Galvanised with white PVC	1800	50	2	300 x 150	332950
Galvanised with black PVC	1800	50	2	300 x 150	332900

Roof Razor®

Designed for use in commercial metal roof system applications. The insulation spacer sits between the roof structure and the external cladding membrane to create the space required for insulation blanket to recover to its full nominal thickness between purlins.



Made from high tensile galvanised steel.

Product information

- Satisfies NCC, Section J Energy Efficiency Provisions
- Suitable product option for use in cyclonic regions
- Impressive national reputation built on ease and speed of installation
- Suitable for use on roofs with a pitch up to and including 30°C
- Compatible with both pierced and concealed fix roof cladding
- 1200mm length to match typical Permastop® Building Blanket width, allowing for a direct line of sight to the purlin
- Cuts through insulation to give a direct connection to the purlin, ensuring that over time the bracket will not loosen as a result of vibration and movement

Product and stock availability

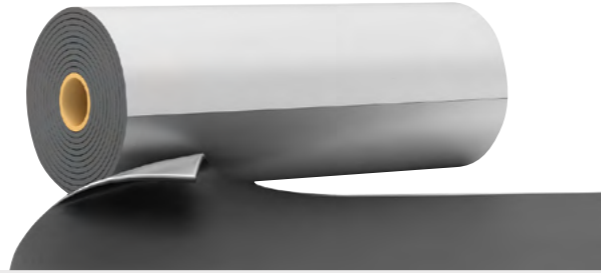
Please check all stock availability with your local Fletcher Insulation representative. Product stock varies and not all products are stocked in every Fletcher Insulation location.

Product	Height mm	Length mm	Pieces per pack	LM per pack	Product code
Roof Razor® pre-loaded screws	60	1200	6	7.2	396299
	85	1200	6	7.2	396291
	115	1200	6	7.2	396292
Roof Razor® timber roof without screws (for fixing to timber battens)	85	1200	6	7.2	396295
	115	1200	6	7.2	396296
Roof Razor® metal roof cyclonic pre-loaded screws	60	1200	6	7.2	396300
	85	1200	6	7.2	396293
	115	1200	6	7.2	396294
Roof Razor® metal roof cyclonic without screws	115	1200	6	7.2	396301

Quadzero™ Loaded Vinyl Barrier

Designed for use in applications where space may be limited to reduce unwanted noise transmission through ceilings, walls, floors, office partitions, machinery enclosures and/or ductwork. Can also be draped to make portable acoustic curtains and screens.

Made from foil faced, heavy mass-loaded vinyl noise barrier with a reinforced fabric backing.



Product information

- Ideal to fabricate around pipe penetrations, ducting and cabling
- High tensile strength, resistant to tearing
- Free from lead, odour-producing oils and bitumen
- Excellent fire retardant properties
- Easy to cut, sew and mechanically fasten into position
- Resistant to most chemicals, solvents and petrol
- Safe to use with allergy sufferers due to low VOC
- Reduces sound transfer from the external roof environment into the building (i.e. rain and overhead traffic)
- Ideal for home theatre rooms, office partitions and meeting rooms
- Can be wrapped around noisy pipes, i.e. fluid or gas pulsation in chemical, petrochemical and waste water treatment plants
- Can be laminated onto lightweight structures to dampen vibration and reduce airborne noise

Product and stock availability

Please check all stock availability with your local Fletcher Insulation representative.

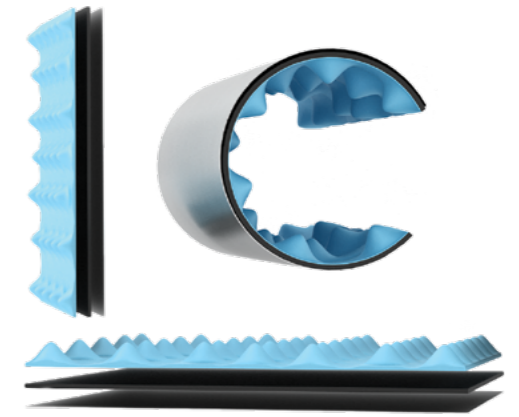
Product stock varies and not all products are stocked in every Fletcher Insulation location.

Barrier weight kg/m ²	Thickness mm	Width mm	Length m	m ² per roll	Roll weight kg	Rolls per pallet	Product code
4	2.0	1350	5	6.7	27	20	330014
6	3.0	1350	5	6.7	41	20	330006
8	4.0	1350	5	6.7	54	30	330008

Soundlag 4525C Pipe Acoustic Lagging

Designed for use around ducts, rainwater or waste pipes to reduce noise levels in residential and multi-residential buildings.

Made from reinforced aluminium foil skin applied to a 5kg/m² flexible loaded vinyl barrier backed with 25mm thick convoluted, hydrolysis resistant, acoustic foam.



Product information

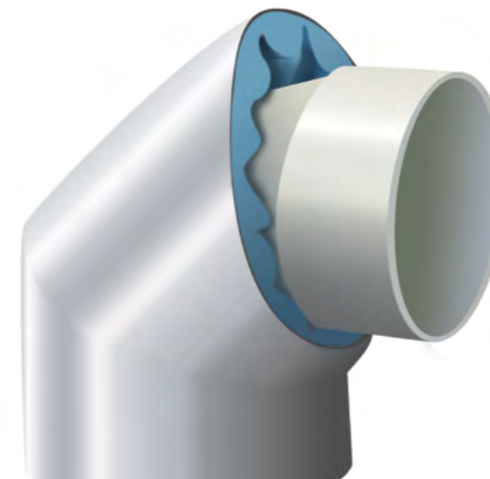
- Maximises noise control by providing high sound absorption (reverberation control) and superior transmission loss
- Highly flexible, allowing it to conform to the smallest diameter pipes and bends (has no memory)
- Conforms well to corners and irregular surfaces
- Broad operating temperature range; max 120°C
- High resistance to heat flow (i.e. low thermal conductivity)
- Reduces the noise in hydraulic and waste pipes by up to 25dB(A)
- Easy to cut and install into tight applications

Product and stock availability

Please check all stock availability with your local Fletcher Insulation representative.

Product stock varies and not all products are stocked in every Fletcher Insulation location.

Barrier weight kg/m ²	Thickness mm	Width mm	Length mm	m ² per roll	Roll weight kg	Rolls per pallet	Product code
5	25	1350	5	6.75	30	50	330025



Vapastop® 883 Reinforced Foil Tape



Designed for use with Sisalation® products to create a vapour sealed joint.

Made from laminated polyethylene film, polyethylene fibre mesh and aluminium foil.

Product stock and availability: Please check stock availability with your local Fletcher Insulation representative.

Product stock varies and not all products are stocked in every Fletcher Insulation location.

Width mm	Length m	Rolls per carton	Product code
48	50	24	318040
63	50	16	318080
72	50	16	318085
96	50	12	318086
120	50	8	318502
144	50	8	318501

Plain Foil Tape



Designed for use with Sisalation® products to create a vapour sealed joint.

Made from dead soft aluminium foil with synthetic rubber/resin on one side.

Product stock and availability: Please check stock availability with your local Fletcher Insulation representative. Product stock varies and not all products are stocked in every Fletcher Insulation location.

General hints

- Ensure surface is clean and free from dust and oil residue, clean with turpentine for best results before applying
- When taping joints, use a plastic squeegee to assist in applying an appropriate amount of pressure along the seam of the tape

Width mm	Length m	Rolls per carton	Product code
48	50	24	318400
72	50	16	318405
96	50	12	318410

3M Seaming Tape



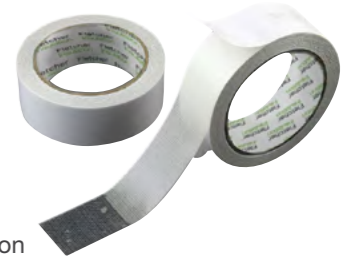
Designed for use with vapour permeable membranes, when joining membranes to avoid moisture ingress at the seams.

Made from white polypropylene, with an acrylic pressure sensitive adhesive.

Product stock and availability: Please check stock availability with your local Fletcher Insulation representative. Product stock varies and not all products are stocked in every Fletcher Insulation location.

Width mm	Length m	Rolls per carton	Product code
48	50	24	318838

Double Sided Cloth Tape



Designed for use as a temporary installation aid for holding Sisalation® foil to metal framing and purlins.

Made from P.E. coated polyester, cotton cloth with synthetic rubber/resin on both sides.

Product and stock availability: Please check all stock availability with your local Fletcher Insulation representative. Product stock varies and not all products are stocked in every Fletcher Insulation location.

Width mm	Length m	Rolls per carton	Product code
24	23	36	318050
48	23	20	318030

Sisalation® MD 440WF White Tape



Designed for use with Sisalation® white faced products to seal joints.

Made from laminated polyethylene film, bonded to paper with synthetic rubber/resin on one side.

Product and stock availability: Please check all stock availability with your local Fletcher Insulation representative. Product stock varies and not all products are stocked in every Fletcher Insulation location.

Width mm	Length m	Rolls per carton	Product code
96	50	12	318611

Black Tape



Designed for use with Sisalation® black faced products to seal joints.

Made from laminated polyethylene film, reinforced scrim, white inked finish with synthetic rubber/resin on one side.

Product and stock availability: Please check all stock availability with your local Fletcher Insulation representative. Product stock varies and not all products are stocked in every Fletcher Insulation location.

Width mm	Length m	Rolls per carton	Product code
48	50	24	318349
72	50	16	318498

Thermatape™ Thermal Break Strip



Designed for use to create a thermal break between the steel frame and the outer cladding material. As well as minimising heat leakage through metal window frames in a home when installed behind the window.

Made from crosslinked polyethylene and silicone coated paper with adhesive.

Product information

- High quality polyethylene structure
- Self-adhesive with peel off backing
- Achieves a material R-value of R0.20
- Suitable for use as a thermal break for steel framed constructions in accordance with NCC requirements
- Reduces the flow of thermal energy between conductive materials such as lightweight metal cladding and steel frames
- Excellent compression resistance
- User friendly, no protective clothing required

Product and stock availability

Please check all stock availability with your local Fletcher Insulation representative. Product stock varies and not all products are stocked in every Fletcher Insulation location.

Material R-value	Nominal thickness mm	Width mm	Length m	Product code
0.2	10	30	10	318004

General hints

- Ensure surface is clean and free from dust and oil residue, clean with turpentine for best results before applying
- When taping joins, use a plastic squeegee to assist in applying an appropriate amount of pressure along the seam of the tape



With one of
Australia's widest distribution and sales coverage networks
Fletcher Insulation is ready to assist you.



Customer Service Phone

1300 654 444

Email: info@insulation.com.au

www.insulation.com.au

© Fletcher Insulation Pty Limited 2023. Fletcher Insulation reserves the right to change product specifications without prior notification. Information in this publication and otherwise supplied to users as to the subject product is based on our general experience and is given in good faith, but because of the many particular factors which are outside our knowledge and control and affect the use of products, no warranty is given or is to be implied with respect to either such information or the product itself, in particular the suitability of the product for any particular purpose. The purchaser should independently determine the suitability of the product for the intended application. The colour PINK, Pink® and Pink Batts® are registered trademarks of Owens Corning Intellectual Capital, LLC used under licence by Fletcher Insulation. FBS-1 Glasswool Bio-Soluble Insulation® is a registered trademark of ICANZ. Unless otherwise stated all ™ and ® are trademarks and registered trademarks of Fletcher Insulation Pty Limited ABN 72 001 175 355. BR003_Revision_6_Issue Date 19092023.



Fletcher Insulation

Building Better, Together

Customer Service Phone
1300 654 444
Email: info@insulation.com.au
www.insulation.com.au